

CEMBRIT

Cembrit Plank & Cembrit Panel

Installation manual

Table of Contents

Product Information	2	Framing and Clearances	13
Self-ventilating facade	3	Fastening	14
Range	4	Installation Methods	15
Accessories	6	Care & Maintenance	20
Profile Use	8	Painting	21
Storing and Handling	11	Health & Safety	22
Cutting and Sealing	12	Warranty	23



Product Information

Eliminate maintenance and moisture problems

Cembrit Plank and Cembrit Panel are made of materials which consist of non-toxic, inorganic raw materials. This means that they remain unaffected by the presence of moisture during and after installation. Cembrit Plank products are fibre cement based planks and panels. Fibre cement is a modern building material made from natural and environmentally friendly raw materials. With more than 90 years experience in the manufacture of fibre cement, Cembrit ensures a sustainable product that incorporates all the advantages of fibre cement.

Quality

All products are CE marked and manufactured to meet, or exceed, the specifications outlined in the EN 12467:2012+A1:2016 Fibre-cement flat sheets, Category A2.

Cembrit fibre cement plank and panel are vapour permeable products which are resilient to the toughest weather conditions experienced around the world. The products consist of grey cement and cellulose filler reinforced with specially selected fibres. Fibre cement absorbs and releases moisture without affecting the durability, strength or performance of the product. All products resist both rot and fungal growth and can withstand considerable fluctuations in weather and climate conditions. Adding to this, Cembrit Plank and Cembrit Panel are non-combustible and offer a fire protection of A2-s1,d0 meaning they will never contribute to fire.

Paints

Cembrit Plank and Cembrit Panel come with a painted surface. An automated painting process seals each piece for maximum resistance to exterior exposure which is backed by a Cembrit 15 year warranty. We offer a broad spectrum of pre-finished design possibilities and special colours are available upon request.

Colour Code	Colour name
CP 010	Agate Grey
CP 020	Natural Clay
CP 030	Pebble Grey
CP 040	Granite Grey
CP 050	Beige Grey
CP 080	Basalt Grey
CP 150	Anthracite Grey
CP 180	Signal Black
CP 210	Pure White
CP 260	Oyster White
CP 280	Silk Grey
CP 340	Copper Brown
CP 360	Nut Brown
CP 370	Oxide Red
CP 380	Red Brown
CP 510	Light Ivory
CP 600	Seafoam
CP 680	Fir Green
CP 760	Coastal Blue
CP 999	Primed*

For RAL / NCS colours, go to www.cembrit.com
Please note that 100% colour matching is not possible, paint must be toned locally.

Notes

0 = Grey	5 = Yellow
1 = Black	6 = Green
2 = White	7 = Blue
3 = Red	9 = Ready for paint finishing

Colour Gloss: Flat 5 - 10

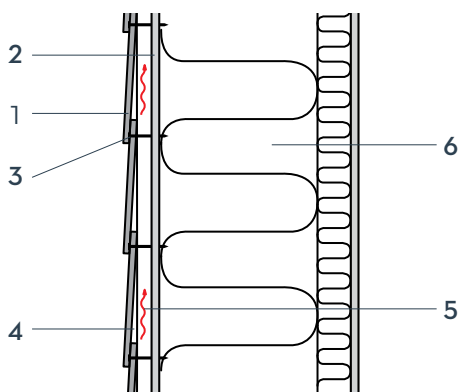
* CP 999 = Product has been coated with an acrylic primer and are delivered "ready for paint" within a 6 months period

Self-ventilating facade

The self-ventilating facade is a physical construction which contributes to reducing temperature variations in the wall throughout the year. Sunlight is reflected in the summertime, and the dry insulation reduces heat loss in cold seasons. At the same time the construction ventilates interior condensation.

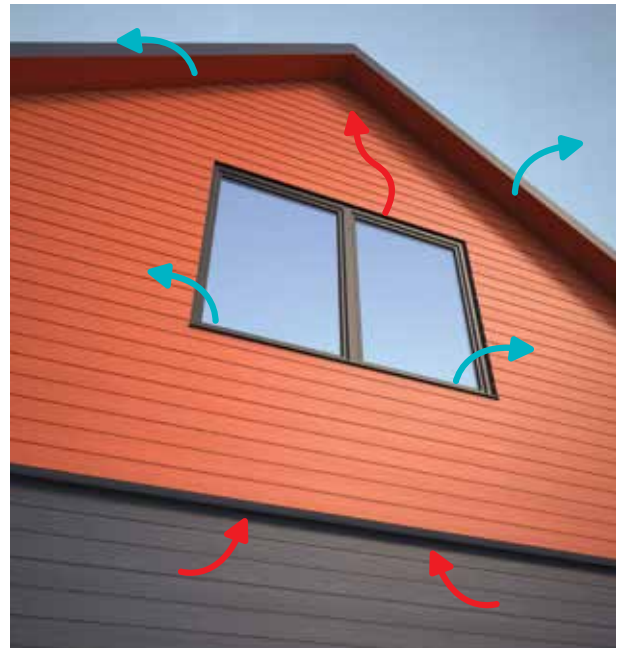
The cavity is ventilated by vent gaps at the bottom and top letting moisture evaporate naturally. If the facade system is not ventilated, it does not allow any moisture to evaporate; which might lead to mould, fungi, etc. on systems without rear ventilation.

Cladding with Cembrit products must always be carried out as a ventilated facade with a min 20mm distance between the cladding and the sheathing or blockwork. However, in special situations (e.g. high rise buildings), local regulations may demand a larger ventilation gap. Inlet and outlet openings must have a cross section of least 100cm²/m.



- 1 Cembrit Plank 8mm
- 2 Cembrit Windstopper 9mm
- 3 Fixing
- 4 Batten min 20mm
- 5 Ventilated area
- 6 Light construction

It must be ensured that there is free passage for ventilation at the bottom and top of a structure as well as ventilation under and over windows/doors etc.

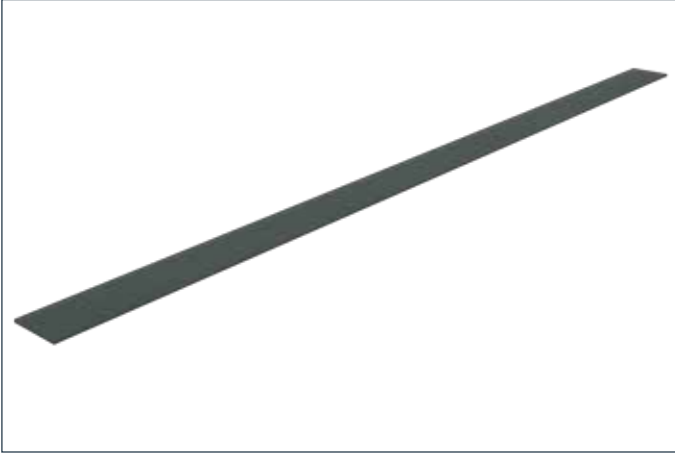


This passage must be a minimum of 10mm in the top and bottom or equal to 100mm per m². If grids or similar are used, the openings must equal 100cm² per linear meter.

Cembrit offers several profiles that make it easy to create elegant solutions in the bottom and top of the cladding as well as around doors and windows.

Range

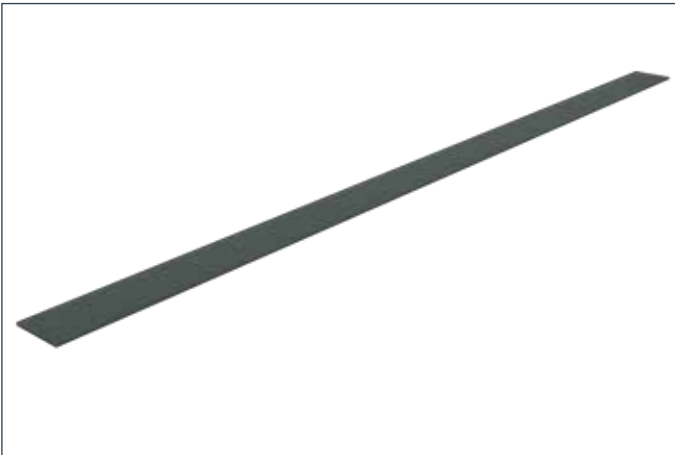
Cembrit Plank



Properties

Length	3600mm
Width	180mm
Thickness	8mm
Weight pcs	7.75kg
Surface	Cedar
Coverage per square metre (Including overlap)	1.85 pcs
fixings per square metre (Framing fixing centres 600mm)	12.8 pcs

Cembrit Plank Smooth



Properties

Length	3600mm
Width	180mm
Thickness	8mm
Weight per piece	7.75kg
Surface	Smooth
Coverage per square metre (Including overlap)	1.85 pcs
Fixings per square metre (Framing fixing centres 600mm)	12.8 pcs

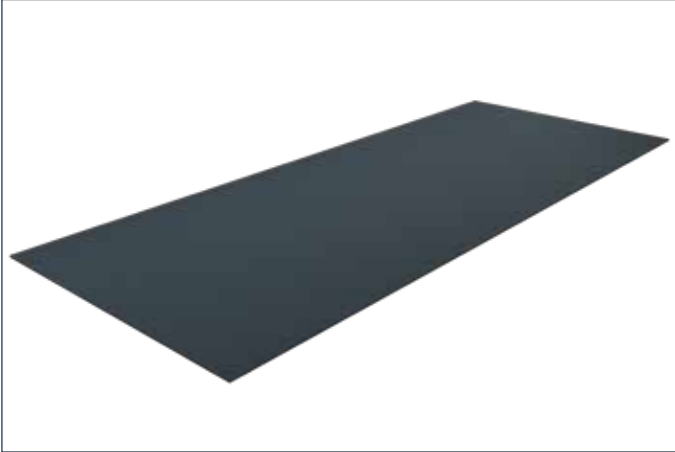
Cembrit Panel



Properties

Length	3050mm
Width	1220mm
Thickness	8mm
Weight per piece	44.59kg
Surface	Cedar
Coverage per square metre	0.27 pcs
Fixings per square metre (Framing fixing centres 600mm)	6.7 pcs

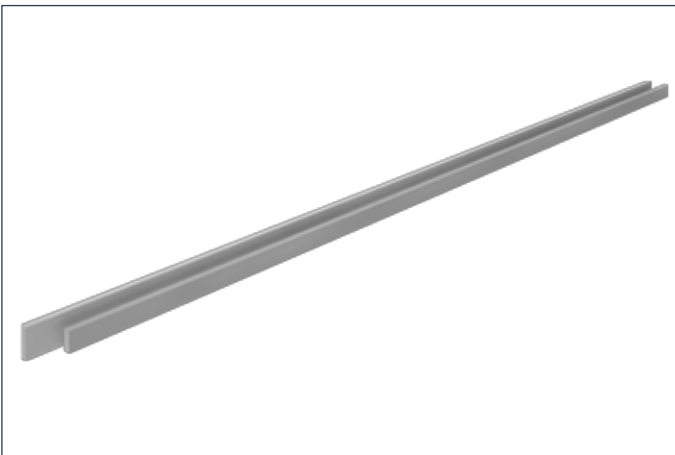
Cembrit Panel Smooth



Properties

Length	3050mm
Width	1220mm
Thickness	8mm
Weight per piece	44.59kg
Surface	Smooth
Coverage per square metre	0.27 pcs
Fixings per square metre (Framing fixing centres 600mm)	6.7 pcs

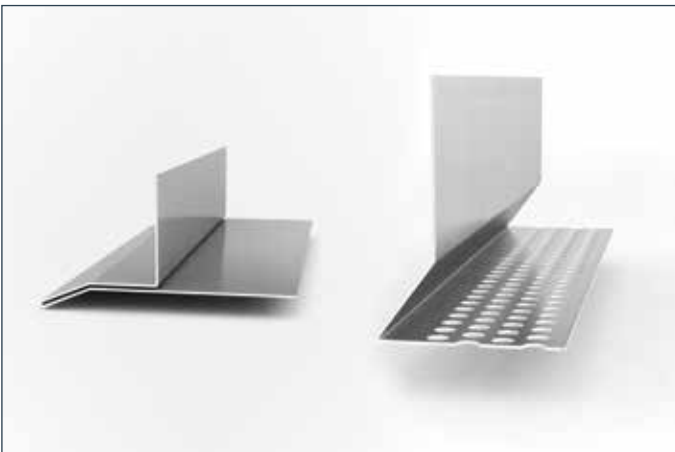
Cembrit FC Trim Reversible



Properties

Length	3650mm
Width	65/90mm
Thickness	25mm
Weight per piece	6.8/9.4kg
Surface	Cedar & Smooth

Cembrit Alu Profiles



Properties

Length	3000mm
Width	Varies
Thickness	1mm
Weight per piece	Varies
Surface	Aluminium
Fasteners per running metre (nail distance fixing centres 600mm)	1.7 pcs

Accessories



Cembrit 38 Wood Screw

3.9x38mm Zytex GX - For hidden fixing on timber battens. Also available for auto feed screwdrivers



Cembrit 27 Steel Screw

3.9x27mm Zytex GX - For hidden fixing on steel battens. Also available for auto feed screwdrivers



Cembrit Facade Wood Screws

4.5x41mm A2 - For visible fastening on timber battens. Available in all colours



Cembrit Facade Steel Screws

4.8x35mm A2 - For visible fastening on steel battens



Cembrit EPDM Flat 0.8x45/95mm

To protect battens from water



Cembrit Plank Acrylic Paint 0.5L

100% Acrylic Latex paint available in all colours



Cembrit Mechanical Shear

Dust free cutting of fibre cement up to 30cm long and 8mm thick



Cembrit Plank Circular Blade

Fibre cement blade for circular saw
Ø160x2.2x20mm



Cembrit Plank Guide

Guide for fixing a small amount of planks



Cembrit Gecko Gauge

Acting as a second set of hands to measure and support the next plank for fastening



25x70/100mm Horizontal ventilation
1mm steel profile

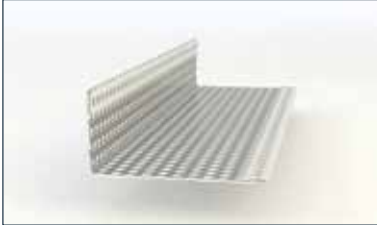


Cembrit Ventilated Wall Profile 40

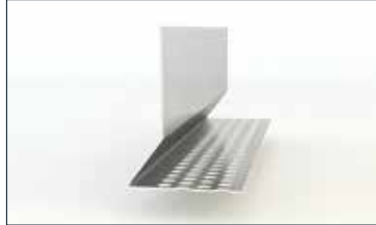
25x40mm Horizontal ventilation
start-end 1mm steel profile

Accessories

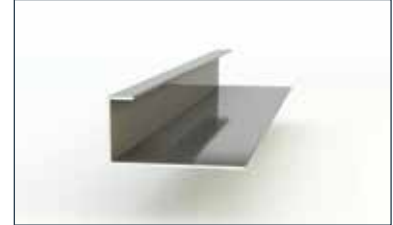
For a quick overview of profile use, see the next pages



1. Cembrit Ventilated Profile
22x50mm steel start/end profile for panels and planks



2. Cembrit Plank/Start Ventilation Profile
25x48mm aluminium start profile for planks



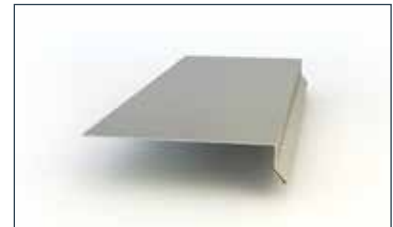
3. Cembrit End Profile
20x40mm coloured aluminium profile for vertical finishing



4. Cembrit External Corner Large
25x35x35mm coloured aluminium profile for 90° angle



5. Cembrit Internal Corner Profile
20x35x35mm coloured aluminium profile for 90° angle



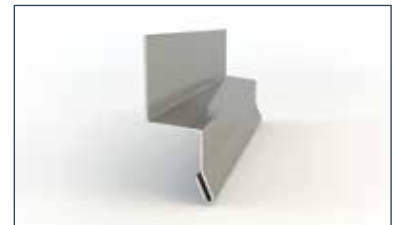
6. Cembrit Window Sill Profile
25x125mm coloured aluminium external sill profile for horizontal finishing



7. Cembrit Vertical Trim Large
40x21x79mm coloured aluminium trim around doors and windows



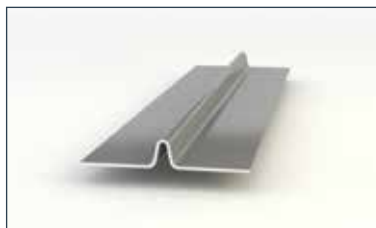
8. Cembrit Horizontal Trim Large
40x50x40mm coloured aluminium trim around doors and windows



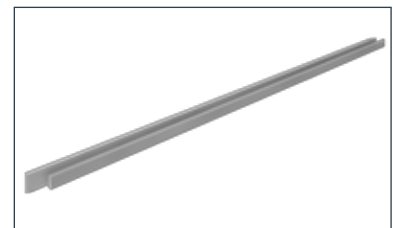
9. Cembrit Drip Large
20x30x25mm coloured aluminium trim



10. Cembrit Vertical T Profile
25x30x30mm coloured aluminium trim for vertical joining of planks



11. Cembrit Caulking Profile
7x50mm aluminium profile for "invisible" joining of panels



12. Cembrit FC Trim Reversible
25x65/90mm Fibre cement trim. With cedar/smooth surface

*See next pages for technical details. Each illustration number will refer to the numbers above.

Profile Use



1. Cembrit Ventilation Profile

To keep a well-ventilated area behind Cembrit products, use a ventilation profile for allowing air to pass from bottom to top of the cladding, whilst preventing insects, vermin and the build up of debris..



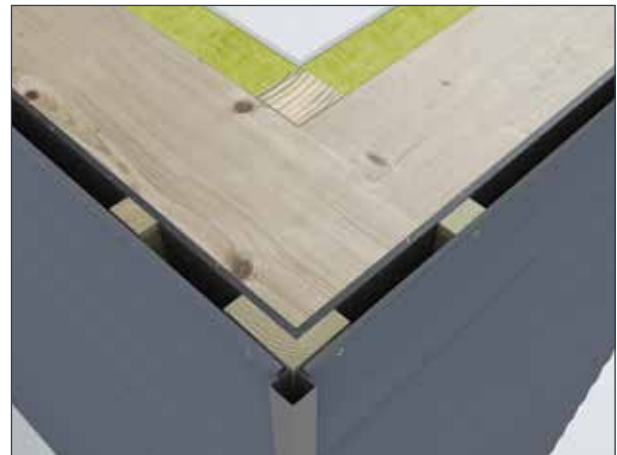
2. Cembrit Plank/Start Ventilation Profile

To maintain the correct distance outwards, the first plank should be 10mm below the profile. The bottom plank is mounted a minimum of 150mm from the terrain, and 50mm from roofing, balconies and other horizontal structures. We recommend painting the rear of the bottom plank, if the distance is less than 150mm from terrain.



3. Cembrit End Profile

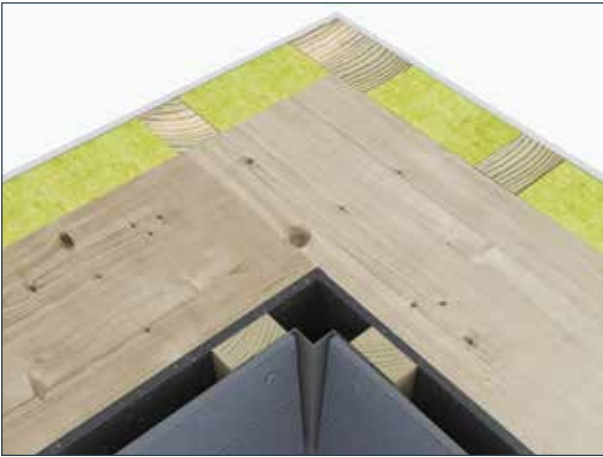
The finish is easily obtained by using a Cembrit End Profile. There must be a minimum of 5mm clearance from the plank/panel to the profile, allowing proper water drainage.



4. Cembrit External Corner Large

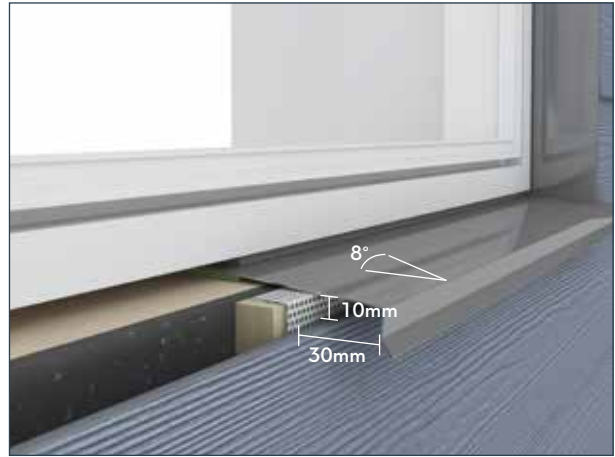
The finish is easily obtained by using a Cembrit External Corner profile. There must be a minimum of 5mm clearance with an optional caulking line from the plank/panel to the profile, allowing proper water drainage.

Profile Use



5. Cembrit Internal Corner Profile

The finish is easily obtained by using a Cembrit Internal Corner Profile. There must be a minimum of 5mm clearance with a optional caulking line from the planks/panels to the profile, allowing proper water drainage.



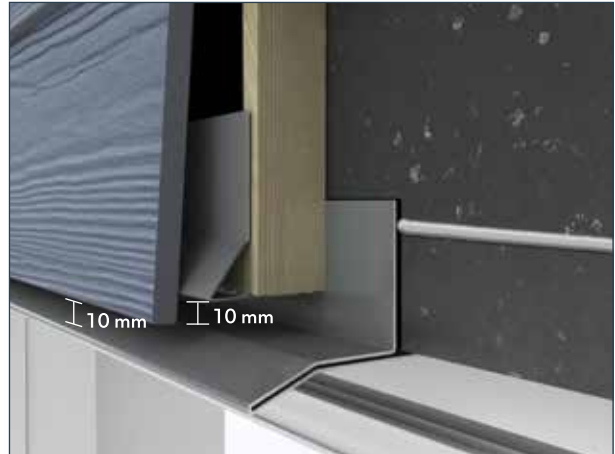
6. Cembrit Window Sill Profile

Using a Cembrit alu profile below windows is a long lasting and durable solution. Do not install Cembrit Plank or Cembrit Panel horizontally in areas where they will be subjected to water for longer periods. For proper ventilation, keep a minimum of 10mm distance to the plank/panel installed below. For window sills longer than 3 metres, cut a slit in the underlying profile and overlap by 25mm. If used with a Cembrit Vertical Trim profile, cut a slit in the Cembrit window ledge profile and bend upwards to form a 25mm overlap.



7. Cembrit Vertical Trim Large

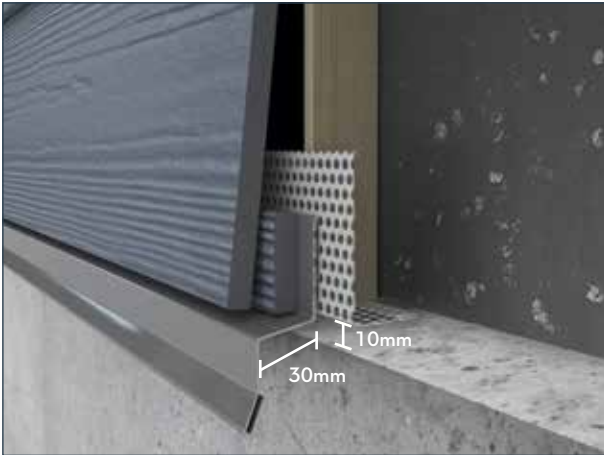
The finish around windows and doors is easily obtained by using a Cembrit Vertical Trim profile. There must be a minimum of 5mm clearance with a optional caulking line from the plank/panel to the profile, allowing proper water drainage.



8. Cembrit Horizontal Trim Large

The finish above windows and doors is easily obtained by using a Cembrit Horizontal Trim profile. There must be a minimum of 10mm clearance from the planks/panels and framing structure to horizontal profiles, allowing proper water drainage. If used with a sheathing board the joint between the trim and the sheathing board must be sealed with exterior grade sealant. We recommend using a high quality, exterior-grade caulk or sealant.

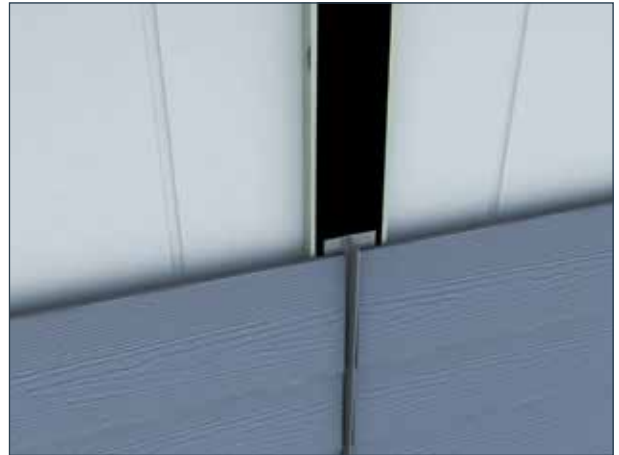
Profile Use



9. Cembrit Drip Cap Large

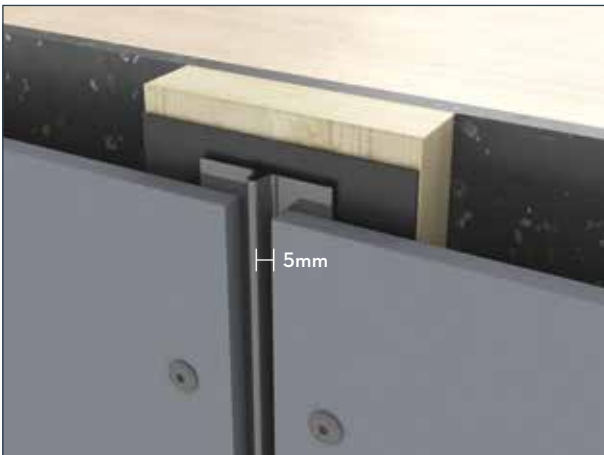
For a long lasting finish, where water should be directed away from the structure, a Cembrit Drip cap is used.

To maintain the plane of the facade, cut a 30mm fillet from a plank. For proper ventilation, leave a minimum of 10mm distance to adjacent surfaces.



10. Cembrit Vertical T Profile

Good-looking vertical finish lines for butt joints can be easily obtained, by using a Cembrit Vertical T Profile. There must be a minimum of 5mm clearance with a optional caulking line from the planks to the profile, allowing proper water drainage.



11. Cembrit Caulking Profile

This profile can be used for the seamless connection of panels and can be used both vertically and horizontally. There must be a minimum of 5mm clearance with a optional caulking line from the planks to the profile, allowing proper water drainage.



12. Cembrit Fibre Cement Trim Reversible

As an alternative to aluminium profiles, and for easy replacement in areas with a high risk of damage, Cembrit Fibre Cement Trim can be used on corners and to cover gaps. There must be a minimum of 5mm clearance from the plank/panel to the trim, with a optional caulking line allowing proper water drainage.

Storing and Handling



Store the pallets on a dry and level surface.



A maximum of 4 panel or 8 plank pallets can be stored on top of each other.



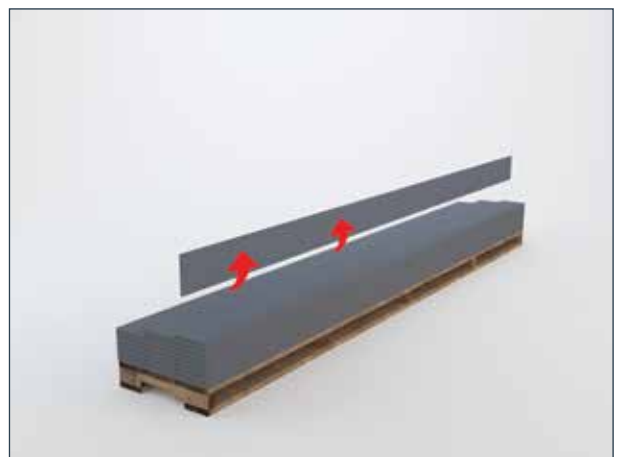
The original packaging may have sustained damage from transportation. Remove the plastic packaging immediately upon delivery at the building site, to avoid risk of efflorescence.



Important: Store materials under a dry and well-ventilated tarpaulin. If the product becomes damp, it should be placed on its vertical edge to allow rapid drying. Never install wet products.



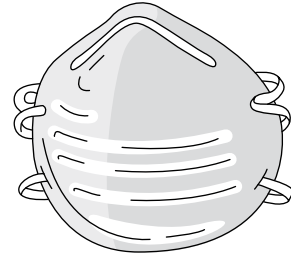
If storing on site for more than 2-3 weeks, the product should be kept under a roof. A maximum of 4 panel or 8 plank pallets can be stored on top of each other.



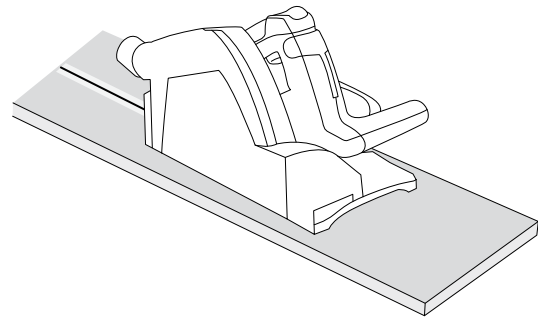
Do not drag products from the pallet, as it may leave permanent scratch marks. Lift the product by its narrow edge as it may break if handled incorrectly.

Cutting and Sealing

When fibre cement is cut, dust is created. This dust may contain crystalline silica which can pose a health risk. To ensure adequate ventilation, always work outdoors and use cutting tools that minimise dust. Or use a HEPA filter vacuum attachment for power saws equipped with a Cembrit Plank Circular Blade to reduce exposure to below applicable exposure limits. Never use water when cutting.



If ventilation is not adequate to limit exposure, wear a disposable respirator or air purifying cartridge respirator fitted with a Class P2 filter (European EN 143 standard). Cut the product by using a polycrystalline diamond-tipped blade. To reduce exposure to dust we recommend using Cembrit Plank Circular Blade.



For a non-ventilated and dust free environment, we recommend using Cembrit Mechanical Shear.

When making cut-outs use a Jigsaw with a carbide blade for fibre cement. As an alternative for small tasks, use a rough woodcutting blade.

In order to protect the edges from chipping, the direction of travel of the blade must be taken into account before deciding on whether to cut the boards on the front or reverse. Take care to remove dust from the surface after installation as leftover cement particles can leave permanent marks.

All on-site cuts (planks, panels, trim) must be resealed with 100% acrylic latex paint before installing. We recommend using Cembrit Plank Acrylic Paint.



Be sure to apply sealant wherever the siding meets the trim and around all windows and doors. We recommend using a high quality, exterior-grade sealant.

Framing and Clearances

The rear of Cembrit Plank and Cembrit Panel should always be protected from exposure. If left exposed in a situation such as fencing etc., the rear of the product should be sealed with a suitable paint/sealer.

Cembrit recommends installing Cembrit Plank and Cembrit Panel on a straight frame - any inconsistencies in the straightness will be noticeable on the finished surface.

There must be a minimum of 150mm from the terrain to the bottom of the Cembrit Plank and/or Cembrit Panel.

The clearance from roofing, balconies and other horizontal areas must be a minimum of 50mm from structures to the bottom of the products.

Do not install product directly in contact with water or surfaces that collect water.

Cembrit Plank and Cembrit Panel can be installed together with a Cembrit Windstopper.

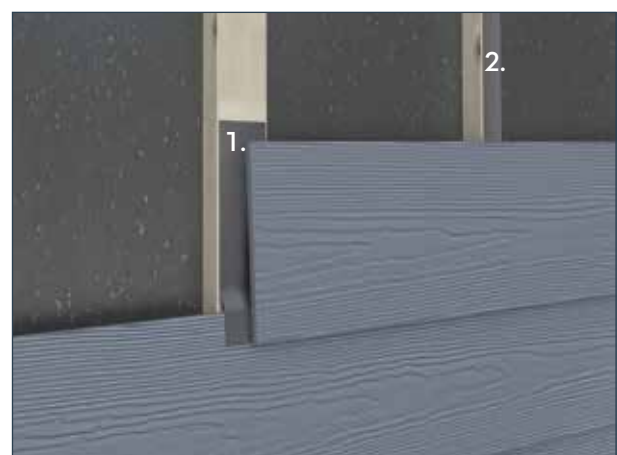
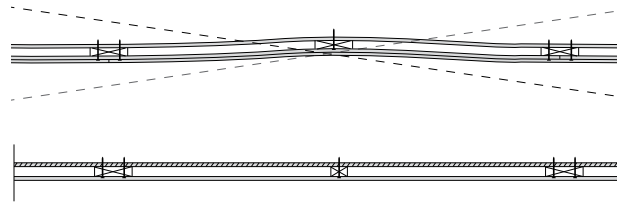
It is important to allow air to flow freely behind the facade product. Keep a minimum distance of 20mm behind the product and a minimum of 10mm gap at the top and bottom of the siding.

There must be a minimum of 5mm (vertical) and 10mm (horizontal) clearance around windows/doors-/framing/metal trim and other building materials to allow for structural movements and proper water drainage and ventilation.

If using untreated timber battens, we recommend using Cembrit EPDM 45/95mm to keep water out.

Installation options

1. Fix a ≈200mm Cembrit EPDM 45/95mm strip on the batten centered above the butt joint, let it extend 20mm on the plank below.
2. Mount Cembrit EPDM 45/95mm on the batten in full length. Use Cembrit EPDM 45 for middle battens and Cembrit EPDM 95 at butt joint battens.



Fastening

Timber battens				Steel battens 0.56 - 2.0mm Steel 0.7 - 1.25mm Steel	
Cembrit facade wood screw	Cembrit 38 wood screw	Nailing by hand	Nail gun	Cembrit facade steel screws	Cembrit 27 steel screw
4.5x41mm stainless steel A2 - For visible fastening	3.9x38mm hardened steel ZYTEC GX - For hidden fixing	2.5x55mm Ring Nail galvanized steel - For hidden fixing	2.5x50mm Coil Nail galvanized steel - For hidden fixing	4.8x35mm stainless steel A2 - For visible fastening	3.9x27mm hardened steel ZYTEC GX - For hidden fixing

On timber

It may be necessary to pre-drill the holes at the corners to prevent the edges from breaking.

Nails must penetrate a minimum of 30mm into the structural framing.

If using screws, a minimum of 20mm must penetrate the structural framing.

If using non-Cembrit recommended screws, please be aware whether the screws require more than 20mm penetration to resist lateral loads.

All nails or screws must be corrosion resistant stainless steel, or double dipped galvanized.

On steel

For hidden fixing on steel, we recommend using Cembrit 27 Steel Screw.

When using metal battens, Cembrit screws must penetrate into the metal framing a minimum of 7mm.

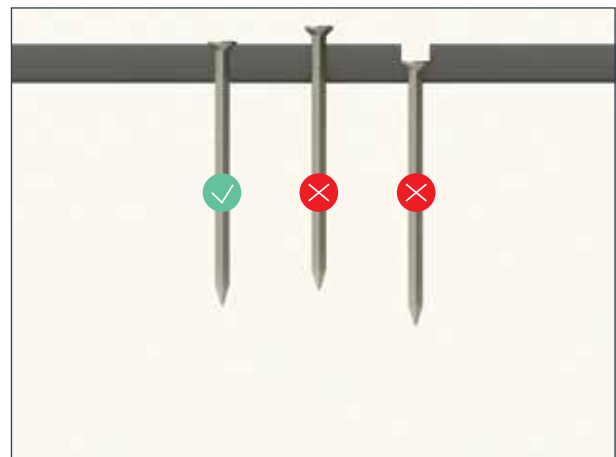
Distances

1. For hidden fixing, all fasteners must be a minimum of 25mm from top edges.

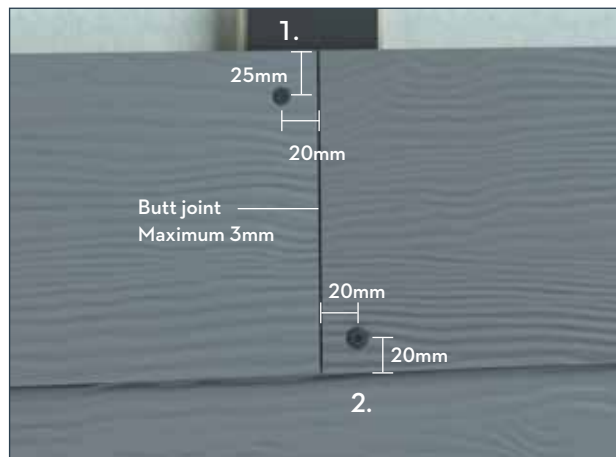
2. For visible fixing no closer than 20mm from other edges and planks corners.

Fixings must never be closer than 16mm to timber batten edges.

TIP! When using visible nail fasteners on Cembrit Planks, please refrain from using 2 nails on top of each other (inner and outer board), as the outer nail will work its way outwards over time.



Do not countersink or angle fixings. Ensure fixings are proud of the surface of the plank.



When butt jointing, make sure planks are moderately butt jointed.

Installation Methods

Cembrit Plank horizontal

Cembrit Plank installation on wood or steel

1. Cembrit Windstopper or similar
2. Wood or Cembrit Ventilated Wall Profile 70/100
3. Cembrit Plank

Batten thickness: A minimum distance of 20mm is needed for ventilation.

Minimum width: For middle battens 45mm

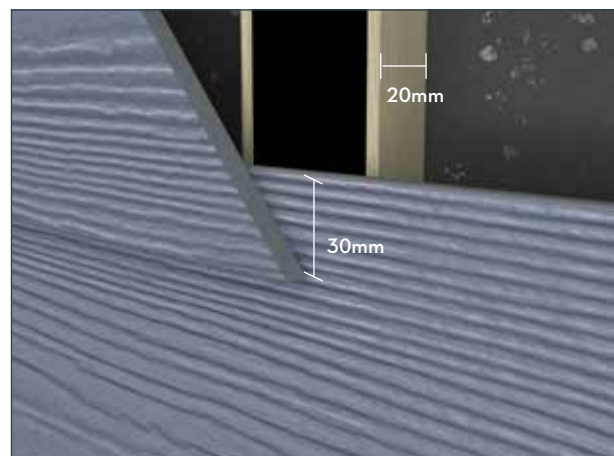
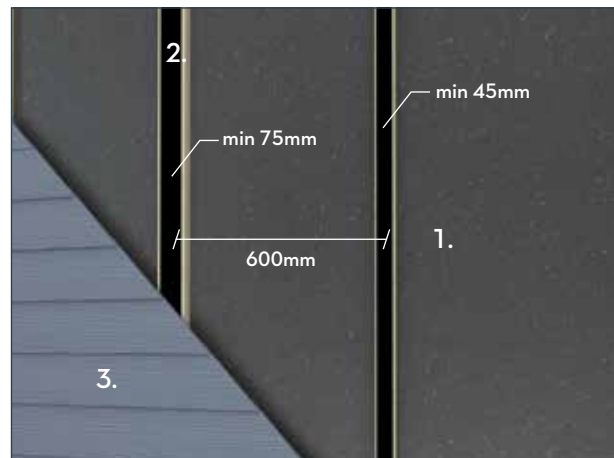
Minimum width: For butt joint battens 75mm

Maximum distance between battens fixing centres 600mm

Always install Cembrit Plank from the bottom of the wall. Starting 1 cm below Cembrit Plank/Start Ventilation Profile.

Use 30mm overlapping of each 180mm plank, by setting a mark for every 150mm upwards.

When butt jointing, make sure planks are moderately butt jointed and always over a batten to avoid warping.



For fast, easy and accurate installation, we recommend using a Cembrit Gecko Gauge. The Geckos assist in creating the correct overlap and ensure the proper location of the screw or nail. Using a Gecko Gauge set clamped to either end of the Planks, makes it possible for one man to install Cembrit Planks.

NB! The Geckos do not scratch or leave marks on the painted planks.



Installation Methods

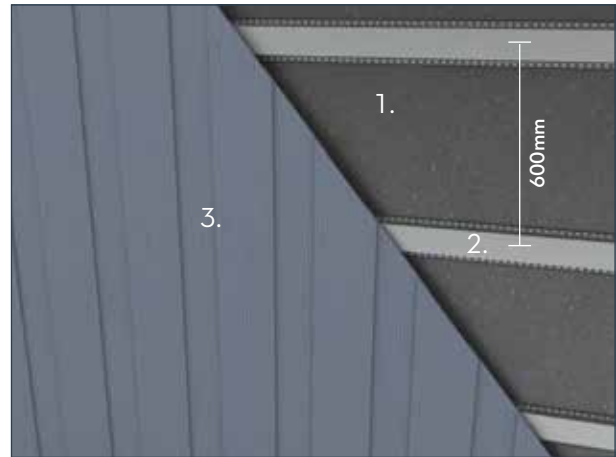
Cembrit Plank vertical

Cembrit Plank on ventilated steel framing

1. Cembrit Windstopper or similar
2. Horizontal Cembrit Ventilated Wall Profile 70/100
3. Cembrit Plank

Maximum distance between battens fixing centres 600mm.

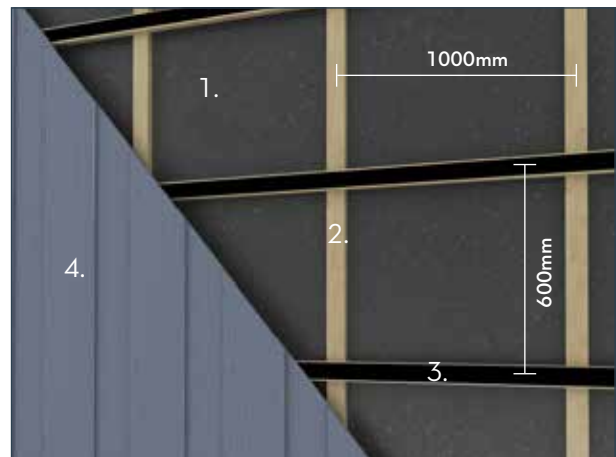
At the bottom of the wall install a Cembrit Ventilated Wall Profile 40. Besides functioning as a fastening point, the Cembrit Ventilated Wall Profile 40 also offers ventilation to the construction. This profile can also be used around windows and doors.



Cembrit Plank on ventilated wood framing

1. Cembrit Windstopper or similar
2. Vertical batten min 20mm thickness, max o.c 1000mm.
3. Horizontal batten 38x56mm.
4. Cembrit Plank

Maximum distance between horizontal battens o.c 600mm.



Fixing for visible fastening on steel or wood frame

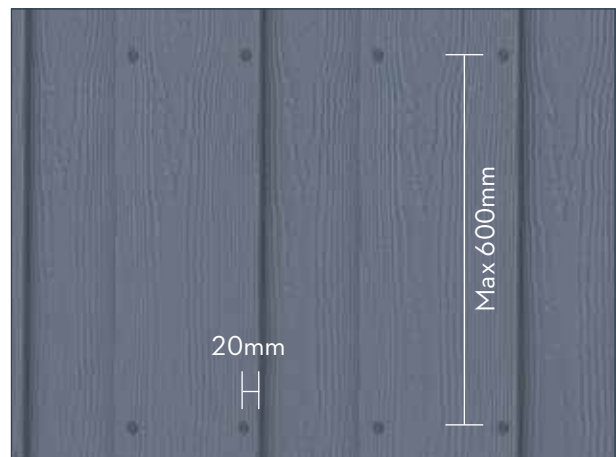
The Upper plank overlaps the edge of the plank by at least 30mm on each edge. The underlying plank is fastened with nails or screws and the top plank with Cembrit Facade Wood Screws 4.5x41mm on wood battens and Cembrit Facade Steel Screws 4.8x35mm on steel profiles. The fastener is placed a minimum of 20mm from the edge and 20mm from the top and bottom corner.

Distance for the planks

Inner plank o.c 300mm distance

Outer plank o.c 300mm distance

Due to the possible ingress of a slight amount of water during high wind driven rain conditions, it is recommended that the rear of the plank is painted at least 50mm in from the edges of the over-lapping plank to prevent efflorescence.



For visible fastening on timber battens, we recommend using Cembrit Facade Screw.

Installation Methods

Cembrit Panel

Cembrit Panel on steel or timber battens.

1. Cembrit Windstopper or similar
2. Cembrit Ventilated Wall Profile 70/100 or timber batten
3. Cembrit Panel

Batten thickness: A minimum distance of 20mm is needed for ventilation.

Minimum width: For middle battens 45mm

Minimum width: For butt joints battens 75mm

Maximum distance between battens fixing centres 600mm

Fastening Distance

No closer than 20mm from edges and 50mm bottom and top corners.

If using Cembrit Facade Screw as fasteners for panels, pattern distance is 400mm around perimeter and in the field.

If using nails as fasteners for panels, pattern distance is a maximum of 150mm around the perimeter and 300mm in the field.

For fastening patterns in high wind load zones, please go to our website www.cembrit.com

Cembrit Panel can be fitted butt jointed or with a maximum 3mm expansion joint. This joint should always be centred on a batten. For runs in excess of 15 meters an expansion joint of 5mm is required. For easy installation of large areas, we recommend using Cembrit Caulking Profile.

Cembrit Panel installation as ceiling or similar

Minimum width: For middle battens 45mm

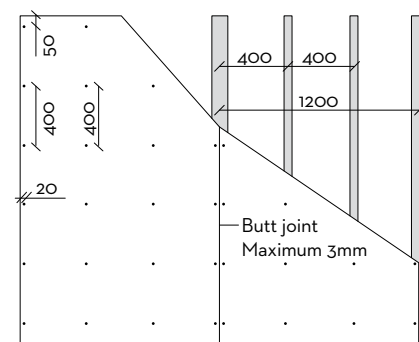
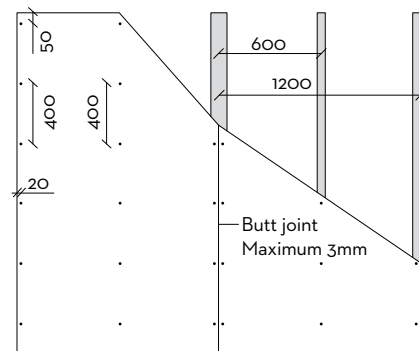
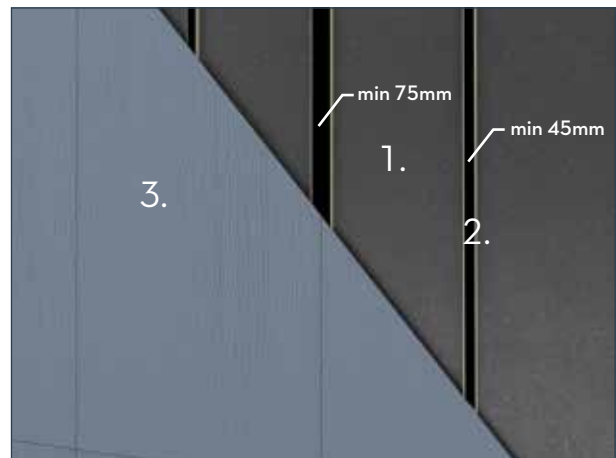
Minimum width: For butt joints battens 75mm

Maximum distance between battens fixing centres 400mm

Fastening Distance

No closer than 20mm from edges and 50mm bottom and top corners.

If using Cembrit Facade Screw, the distance is 400mm around perimeter and in the field.



Installation Methods

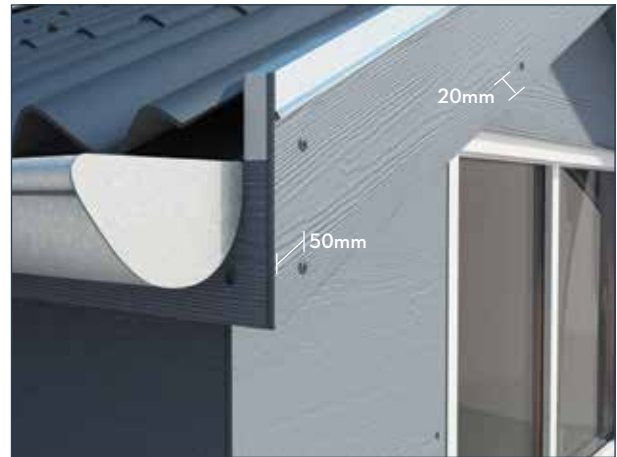
Cembrit Panel used as bargeboards and fascia

Fascia & bargeboards higher than 180mm can be installed using Cembrit Panel fastened with Cembrit Facade Screw.

The fascia board should be installed on 19mm water-proof plywood, to keep its straightness.

Bargeboards can be mounted directly onto rafters.

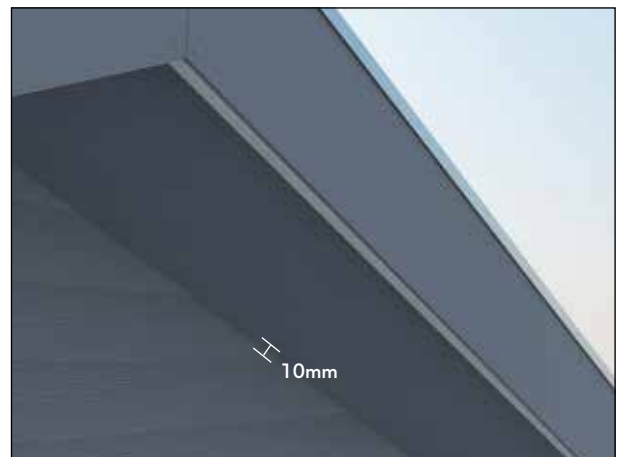
Maximum width of Cembrit Plank and Cembrit Panel without ventilation is 400mm, making sure that there is no possibility of water ingress.



Cembrit Panel used as soffit

Cembrit Panel can also be used as soffit when cut to the correct size. Care must be taken to ensure that the correct ventilation gap of 10mm is present.

Maximum distance between battens fixing centres 400mm



Cembrit Panel used on dormer

Cembrit Panel may also be applied on dormer and other large surfaces where the use of Cembrit Plank can be difficult. Cembrit Panel can be installed either in large format or cut in to size.

NB! For more information about the fastening and sub constructions, see page 14.

If applying the Cembrit Plank and Cembrit Panel on soffits or dormers, remember to leave a gap of min 10mm along the edge for a well-ventilated construction.

All on-site cuts must be resealed with 100% acrylic latex paint before installing.



Installation Methods

Cembrit Trim

Cembrit FC Trim Reversible

1. Cembrit FC Trim Reversible 25x65/90mm

Vertical fastening distance 400mm

Horizontal fastening distance 300mm

2. Cembrit Plank or Cembrit Panel

If you install Cembrit FC Trim Reversible on overlapping planks, be sure to nail on the overlapping points and into the framing.

Use 2.5x60mm HDG nails for fibre cement trim. Always nail from one end to the other. Never nail from both ends to the middle as it will stress the trim board. Drive the fastener flush with the trim. Do not overdrive the fasteners. If a fastener is driven below the surface of the trim, its holding power is reduced, and it creates an entryway for moisture.

When making 90° corners, it may be necessary to predrill 12mm from the edge to help prevent the edges from breaking.

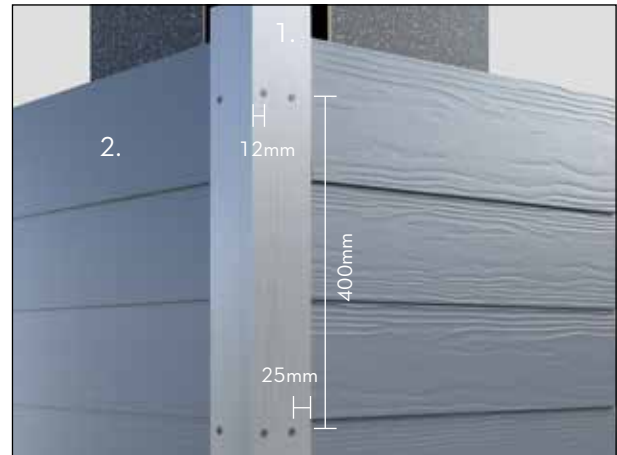
Position fasteners no closer than 25mm from the side edges of the trim and no closer than 50mm from the top and bottom.

If using trim only on one side, fasten 25mm from edges on both sides of the trim.

If using trim in e.g. window- or doorsills, mitre-cut the corners for best finish.

Cembrit Alu Profiles

Profile fastening distance is 600mm with a minimum of 2.5x25mm roofing nail, in Ø4mm pre-drilled holes. If it is necessary to install more than one Cembrit alu trim after another, make sure to leave a 1mm gap between the two trim profiles to allow for joint movement.



NOTE! If using unpainted aluminium in connection with fibre cement products, be aware of surface oxidation.

Care & Maintenance

Annual Inspection

Normally Cembrit facade products do not require any maintenance to keep up its strength, properties and function. Weathering impacts may however influence the visual appearance of the facade. Therefore, an annual inspection of the ventilation gaps, joints and fixings is a good idea.

Detection and repair of possible damage secures a prolonged lifetime for the facade.

Cleaning

Cembrit facade can be cleaned with cold or lukewarm water if necessary with the addition of a mild household cleaning agent not containing solvents. Always start from below with well-defined areas. Rinse with plenty of clean water until the facade is perfectly clean.

Before cleaning full scale, it is recommended to test the chosen cleaning method on a smaller area to make sure it answers its purpose.

High Pressure Cleaning

Warning! High Pressure Cleaning is a severe treatment for fibre cement cladding. Exaggerated or wrong use of a high pressure cleaner may damage the surface. Therefore, High Pressure Cleaning is not recommended.

Moss & algae

Moss and algae growth can be removed with common agents available on the market. Care should be taken to ensure that the cleaning agent does not cause damage to the surface of the plank or panel. Confirm the compatibility of your cleaning agent for use with 100% acrylic latex paint with your cleaning agent supplier and ensure it is applied according to the supplier's instructions. It is advised that before conducting a large scale application a test is carried out on a small, inconspicuous area to ensure that the cleaning agent has no effect on the colour of the plank or panel.

Efflorescence

Efflorescence is a naturally occurring, white, powdery deposit that can appear on cement-based building materials (including bricks, cement walls, grout, and fibre cement). It is the result of a process in which moisture draws salt crystals to the surface, evaporates, and leaves a chalky substance behind.

Efflorescence occurs when all three of the following conditions exist:

1. Water-soluble salts are present in the building material.
2. There is enough moisture in the wall to turn the salts into a soluble solution.
3. There is a path for the soluble salts to get to the surface.

Efflorescence may also be a sign of water intrusion behind the siding. Make certain that all openings are properly covered and there is no water intrusion due to over-driven nails.

While some efflorescence may weather away naturally on its own, it is best to take steps to treat it. Efflorescence can be removed with household white vinegar and water. For most cases of efflorescence, Step 1 - 3 works well. But for substantial deposits of efflorescence go to Step 4.

For best results, follow these cleaning instructions:

1. Protect areas that are not to be cleaned. Rinse all plants and vegetation around the facade with water before and after application of the vinegar.
2. Generously coat the entire surface area with vinegar. Allow the solution to sit on the surface for 10 minutes.
3. Rinse the treated area thoroughly with water from the top down and allow the area to air dry.
4. For extra tough efflorescence:
Use a 10% acetic acid solution and apply to affected area with a cotton cloth. A light scrubbing with the cotton cloth may be required. After about 20 seconds rinse with water.

Painting

All Cembrit Planks, Panels & Trim are factory sealed. Reseal cut edges with a high-quality 100% acrylic latex paint before installation.

Use only top quality, exterior type, acrylic latex paints. Confirm the compatibility of your paint to fibre cement with your paint supplier. Cembrit recommends a 100% acrylic latex paint using only the highest-grade paints.

The product must be allowed to breathe. Do not prime, paint, or stain on the reverse side. Cembrit Plank CP 999 is factory primed, a finish coat should be applied within 6 months of installation. Use a high-quality 100% acrylic latex paint. Before applying the finish coat, always follow the paint manufacturer's recommendation for surface preparation and paint application.

NOTE: Never apply oil-based paints to Cembrit Planks, Panels or Trim. Always paint out of direct sunlight and with a 100% clean and dry surface, above 10° Celsius. Take care to paint entire planks before stopping, as drying lines will show.

Cembrit is not responsible for surface paints and workmanship.

Health and Safety

Avoid breathing silica dust

As with all other building materials, adherence to local building rules and regulations when working with Cembrit products is required. Working with crystalline silica containing products should be conducted in well-ventilated conditions by use of simple and effective precautions.

When cutting, grinding or drilling, respirable crystalline silica is released. Breathing large amounts of dust may cause irritation to respiratory functions, eyes and/or skin.

Therefore wear personal protection equipment (Safety goggles, safety suit and a respiratory mask - P2 marked) See safety data sheet for full information.

Ensure adequate ventilation at workstation. For best practice use Cembrit Mechanical Shear.

Remove dust after installation with water to suppress airborne dust particles.

Warranty

Warranty

Warranty conditions can be commissioned at your local Cembrit representative.

Disclaimer

The information contained in this publication and otherwise supplied to users of Cembrit products is based on Cembrit's general experience, best knowledge and belief. However, due to factors which fall beyond Cembrit's knowledge and control, which can affect the use of the products, no warranty is given, expressed or implied with respect to fitness for particular purpose or otherwise.

Cembrit's policy is one of continuous improvement. Cembrit therefore reserves the right to alter specifications at any time and without notice. Colours and textures may vary according to light and weather conditions. Owing to this and limitations of the printing process, colours in this brochure may vary.

Please, ensure that you have the latest version of this publication by checking that the publication date corresponds with the downloadable version from our website. In case of doubt, please contact your local Cembrit representative.



CENBRIT

Cembrit Ireland Ltd
Unit 6 Northwest Business Park
Ballycoolin, Dublin 15
Ireland

Tel.: +353 1 9058300
Fax: +353 1 8991664
info@cembrit.ie
cembrit.ie

Cembrit is one of the leading European manufacturers of multi-capability fibre-cement building products. Our products and solutions add exciting new design opportunities for moulding attractive, durable settings for people's lives. But Cembrit is more than mere products. We also help make all kinds of design and construction projects easier - as well as more profitable, inspiring and effective.

And for us, all construction also involves building relations with people, making your day better, and helping you make the day better for others. Making it a day to remember.